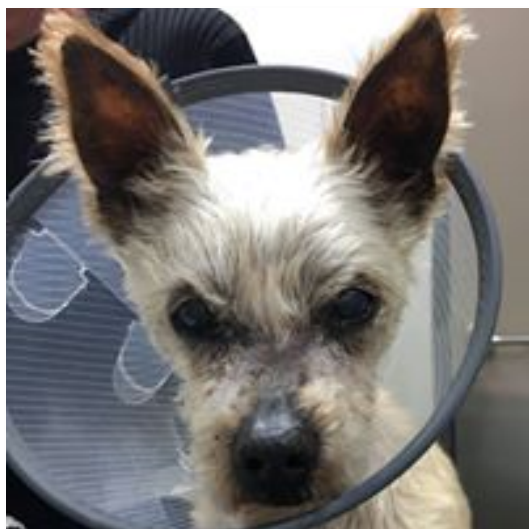


The importance of the E-collar



A filthy look is better than a more damaged eye!

The E-collar is annoying and not very fashionable however, it performs a very important task, by protecting the eye from further damage and allowing healing.

The simple act of an animal rubbing their eye with their paw can prolong the healing process. We need to embrace the E-collar and use it more! When referring a case whether it's on the same day or a few days later, if the animal has any type of ulcer or trauma, put an E-collar on.

Tips

- Feeding: make sure the diameter of the food and water bowls are small than the diameter of the E-collar.
- Sometimes having the bowl raised up on a small block or brick can help
- Clean the inside of the E-collar after feeding
- Finally check the neck for irritation particularly in breeds with skin allergies and generally breeds with irritable skin eg Shar Peis, Bulldogs

We have 3 different types:

- The regular clear slide and click - Apex brand, many brands
- The soft edge comfort - Buster brand. There is also a click in soft edge collar (see image 2 to the right) - make sure the black buttons are on the outside otherwise they can cause trauma on the inside of collar.
- A fairly new product design especially for brachy breeds - Buster brand, they are shorter but allow for wider necks



They can still be happy with a collar on



They can still socialise



Friends will support them



Can still look stylish